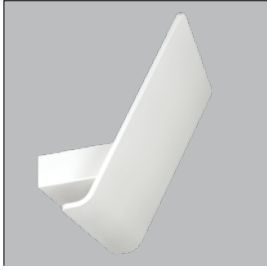
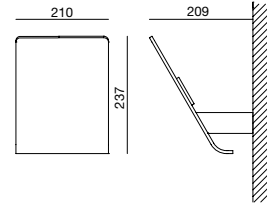




iWing
6645 963



6645 963 303	350mA	2.000lm	11,2W	178,6lm/W	3.000
6645 963 305	500mA	2.900lm	16,2W	179lm/W	3.000
6645 963 307	700mA	3.900lm	23,2W	168lm/W	3.000
6645 963 310	1050mA	5.600lm	35,8W	156,4lm/W	3.000
6645 963 403	350mA	2.000lm	11,2W	178,6lm/W	4.000
6645 963 405	500mA	2.900lm	16,2W	179lm/W	4.000
6645 963 407	700mA	3.900lm	23,2W	168lm/W	4.000
6645 963 410	1050mA	5.600lm	35,8W	156,4lm/W	4.000
code	mA	lm	module W	lm/W	°K



CASAMBI
COMPATIBLE

colores_colors
1 8

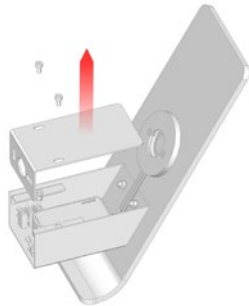
materiales_materials
aluminio inyectado
y acero
die cast aluminium
and steel





| iWing
6645 963

INSTRUCCIONES_INSTRUCTION

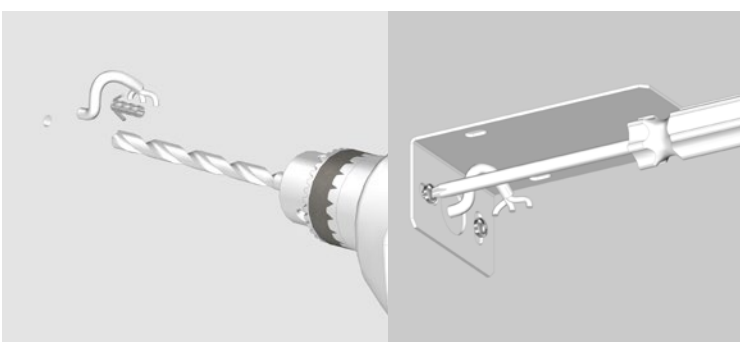


Cortar la corriente.

Switch the power off.

Retirar la tapa superior de la luminaria.

Remove the top cover of the luminaire.

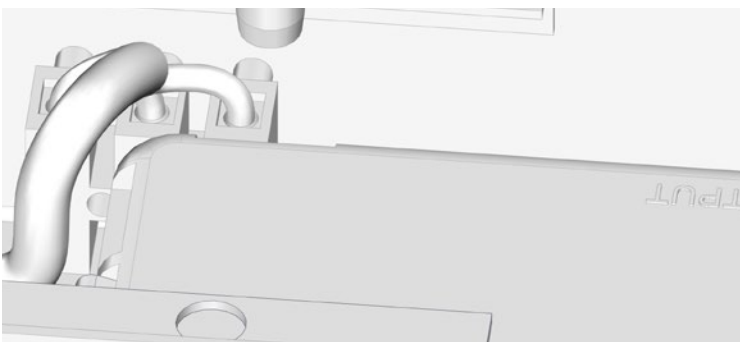


Hacer los taladros en la pared a la distancia que indican los orificios de la tapa.

Drill the holes in the wall at the distance indicated by the cover slots.

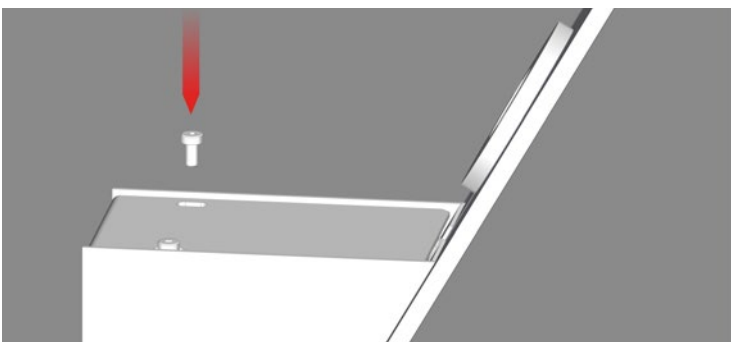
Introducir los tacos. Fijar la tapa a la pared dejando el latiguillo accesible.

Introduce the wall plugs. Fix the cover to the wall leaving the cables accessible.



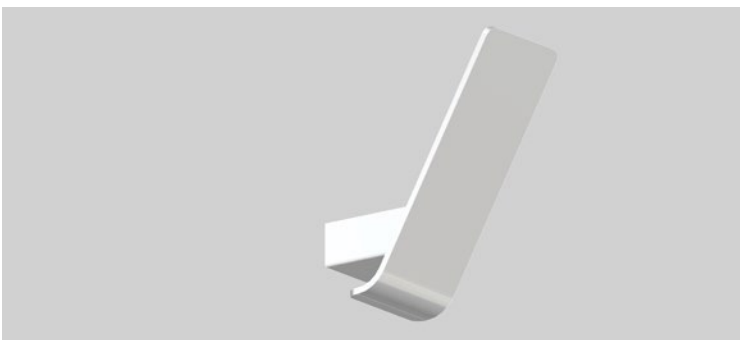
Conectar el latiguillo a la clema incluida en el cuerpo de la luminaria.

Connect the cables to the terminal block included in the luminaire.



Fijar la luminaria a la tapa reponiendo los tornillos.

Fix the luminaire to the cover, replacing the screws.



La luminaria está lista, puede conectar la corriente.

The luminaire is ready, you can connect the power.