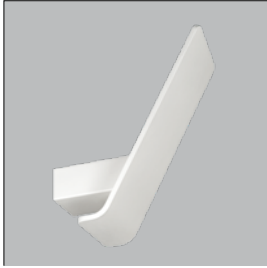
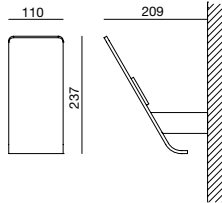


iWing  
**6644** 963



6644 963 303	350mA	2.000lm	11,2W	178,6lm/W	3.000
6644 963 305	500mA	2.900lm	16,2W	179lm/W	3.000
6644 963 307	700mA	3.900lm	23,2W	168lm/W	3.000
6644 963 403	350mA	2.000lm	11,2W	178,6lm/W	4.000
6644 963 405	500mA	2.900lm	16,2W	179lm/W	4.000
6644 963 407	700mA	3.900lm	23,2W	168lm/W	4.000
code	mA	lm	module W	lm/W	°K



colores\_colors

1 8

materiales\_materials

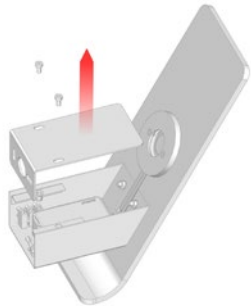
aluminio inyectado  
y acero  
die cast aluminium  
and steel





| iWing  
**6644** 963

## INSTRUCCIONES\_INSTRUCTION

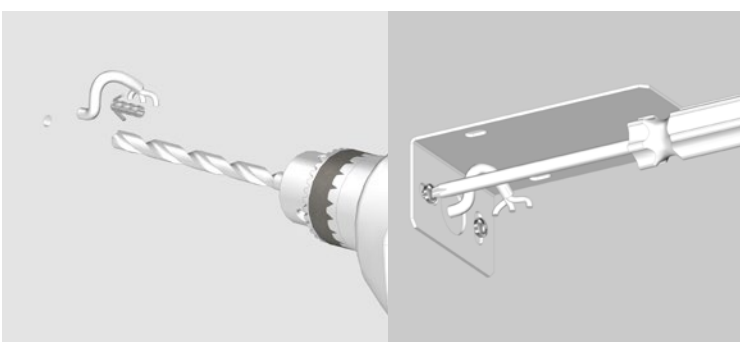


Cortar la corriente.

*Switch the power off.*

Retirar la tapa superior de la luminaria.

*Remove the top cover of the luminaire.*

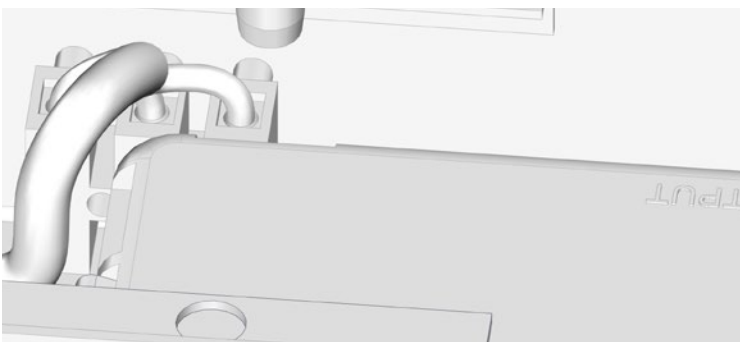


Hacer los taladros en la pared a la distancia que indican los orificios de la tapa.

*Drill the holes in the wall at the distance indicated by the cover slots.*

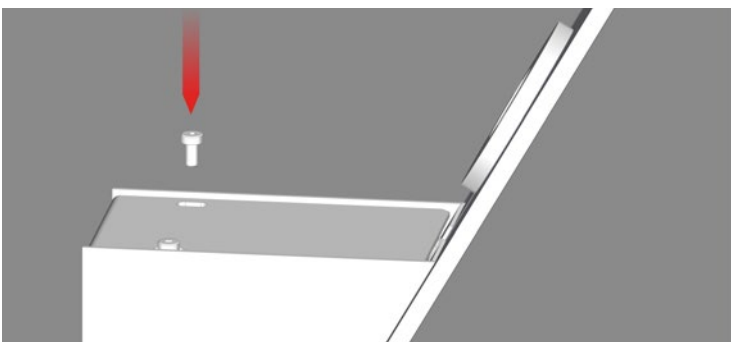
Introducir los tacos. Fijar la tapa a la pared dejando el latiguillo accesible.

*Introduce the wall plugs. Fix the cover to the wall leaving the cables accessible.*



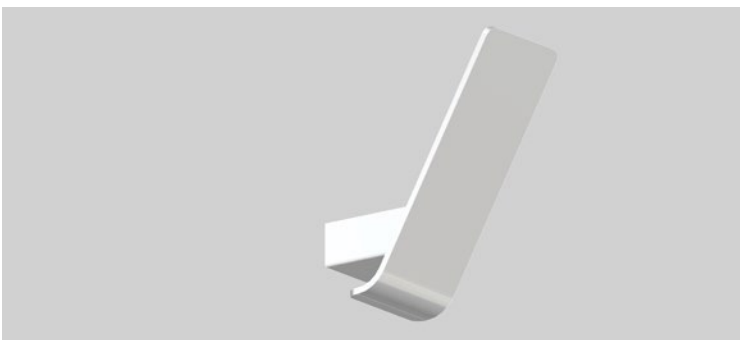
Conectar el latiguillo a la clema incluida en el cuerpo de la luminaria.

*Connect the cables to the terminal block included in the luminaire.*



Fijar la luminaria a la tapa reponiendo los tornillos.

*Fix the luminaire to the cover, replacing the screws.*



La luminaria está lista, puede conectar la corriente.

*The luminaire is ready, you can connect the power.*